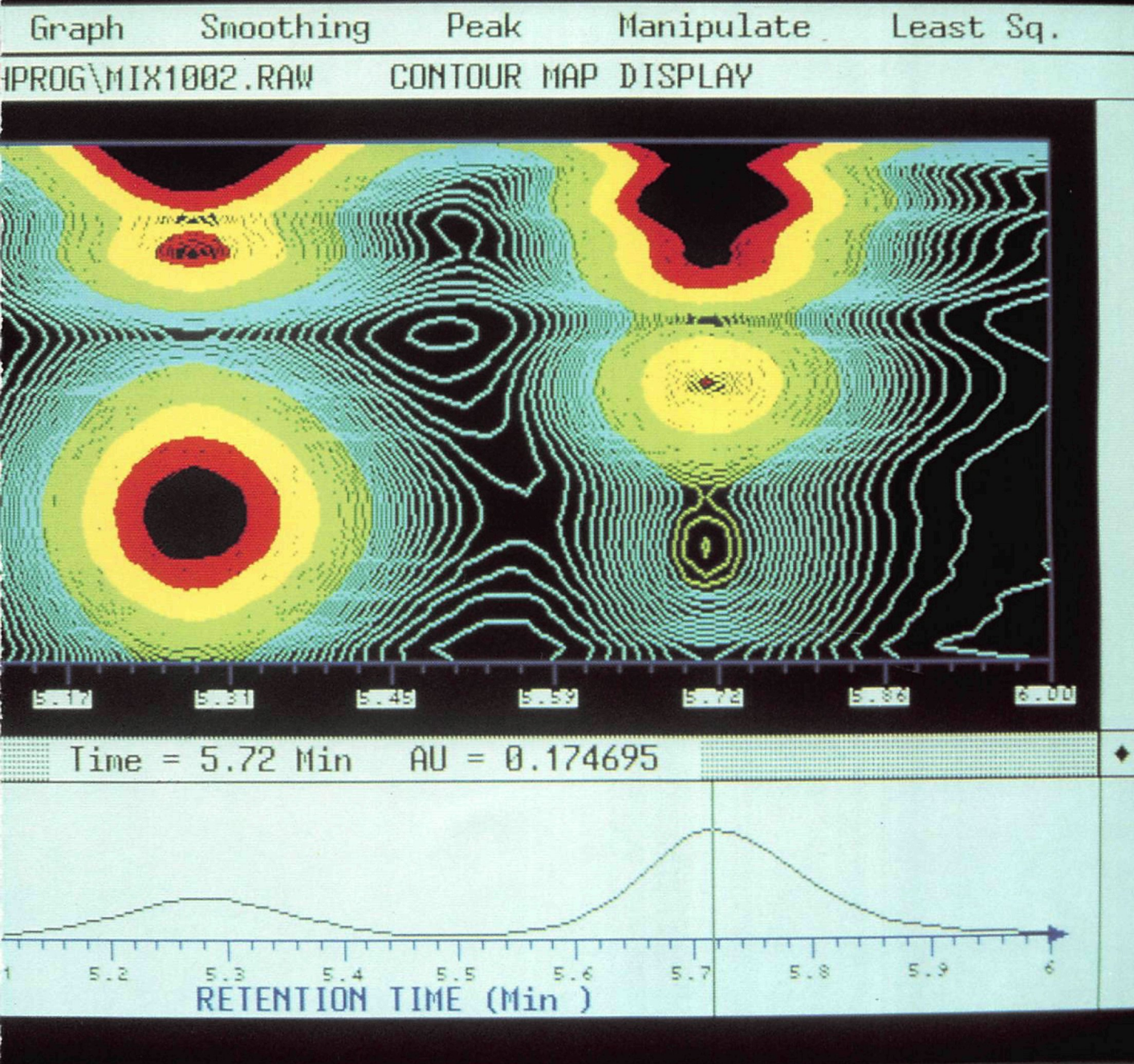


Chrom-A-Scope®

**Rapid scanning
HPLC detector
with powerful
desktop computing
capabilities**



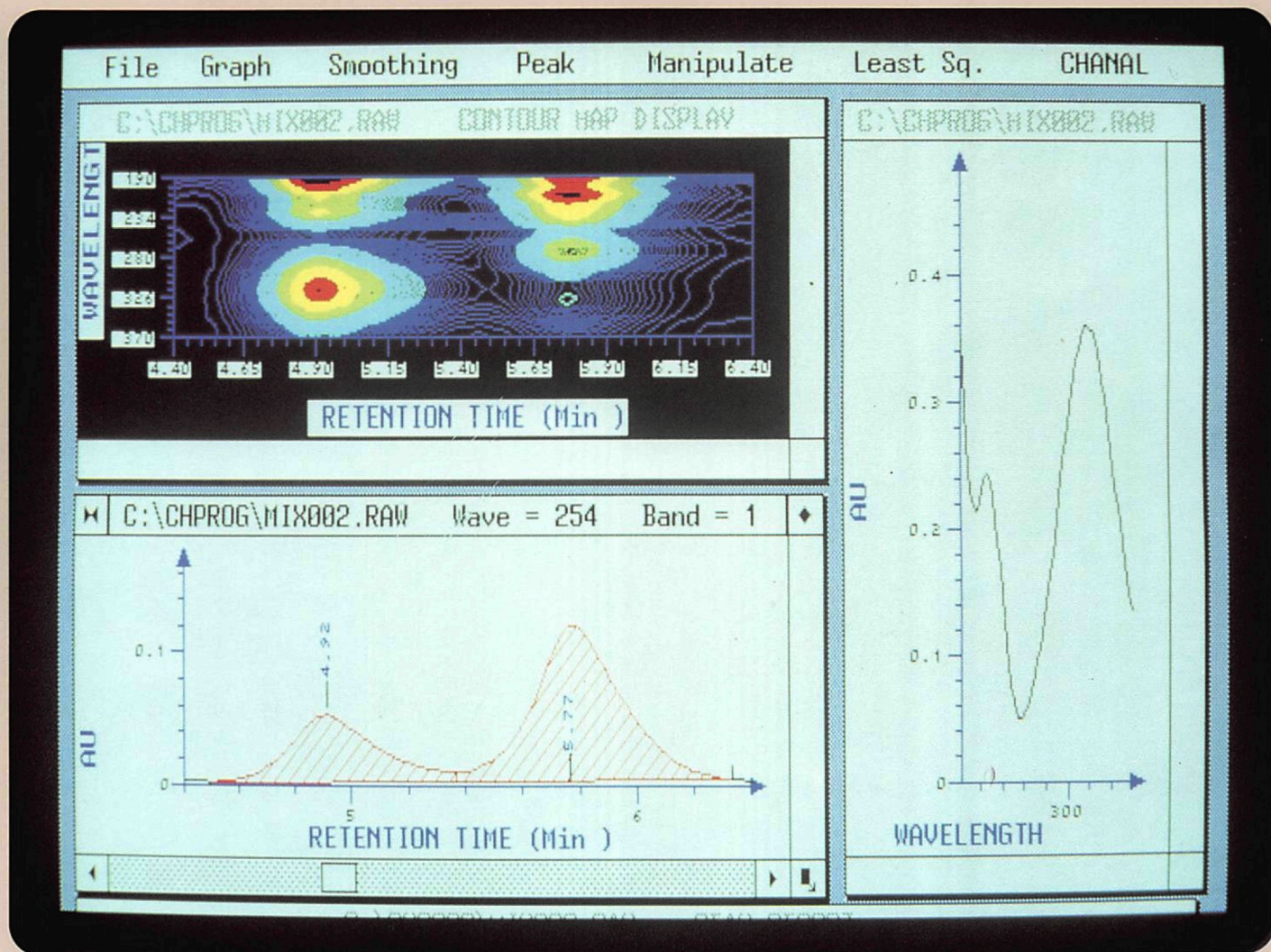
BarSpec™

The pure facts. Fast.

Pick and click!™
BarSpec's
Desktop Chromatography™
does the rest.



**Over two thousand spectra
at 1nm wavelength resolution
for each
chromatogram?**



Chrom-A-Scope performs ten complete spectral scans (UV or VIS) per second.

BarSpec's patented rapid-scanning holographic grating is based on classical optics using tomorrow's technology today.

Light transmitted by the optical subsystem through a sample cell is monochromatic, leading to low induced fluorescence and reduced photodecomposi-

tion. Thus Chrom-A-Scope's quantitative and qualitative analyses are far more accurate.

This unique device combined with software based direct memory access, collects and records every spectrum on permanent storage media with 1 nm resolution.

No presetting of parameters is required.

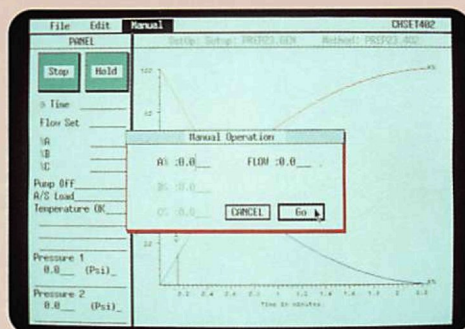
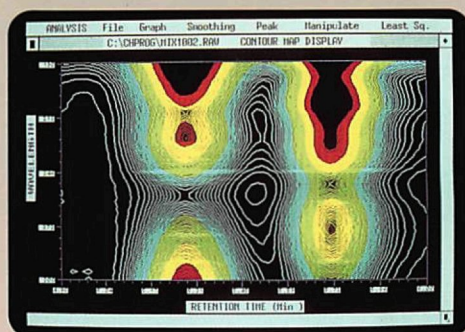
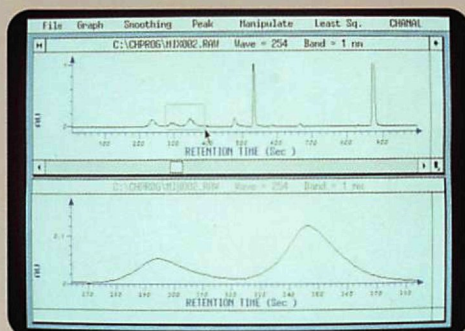
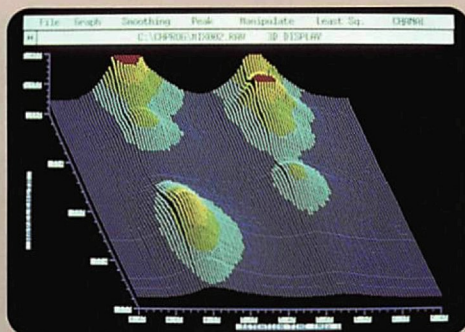
The bottom line is high resolution, ultra fast spec-

troscopy, with superior optical qualities and reliable sample identification.

What you see is what there is - Chrom-A-Scope doesn't degrade the sample.

And just as important: a few friendly clicks of the "mouse," and what you see on the screen is instantly transformed into a publication-quality report.

BarSpec's desktop chromatography™: the most powerful HPLC desktop computing system available



In just an hour or so of hands-on practice, you'll be turning out finished reports, complete with graphics and text.

Chrom-A-Scope's unsurpassed software works with your PC or a variety of compatible models – from desktop chromatography to desktop publishing.

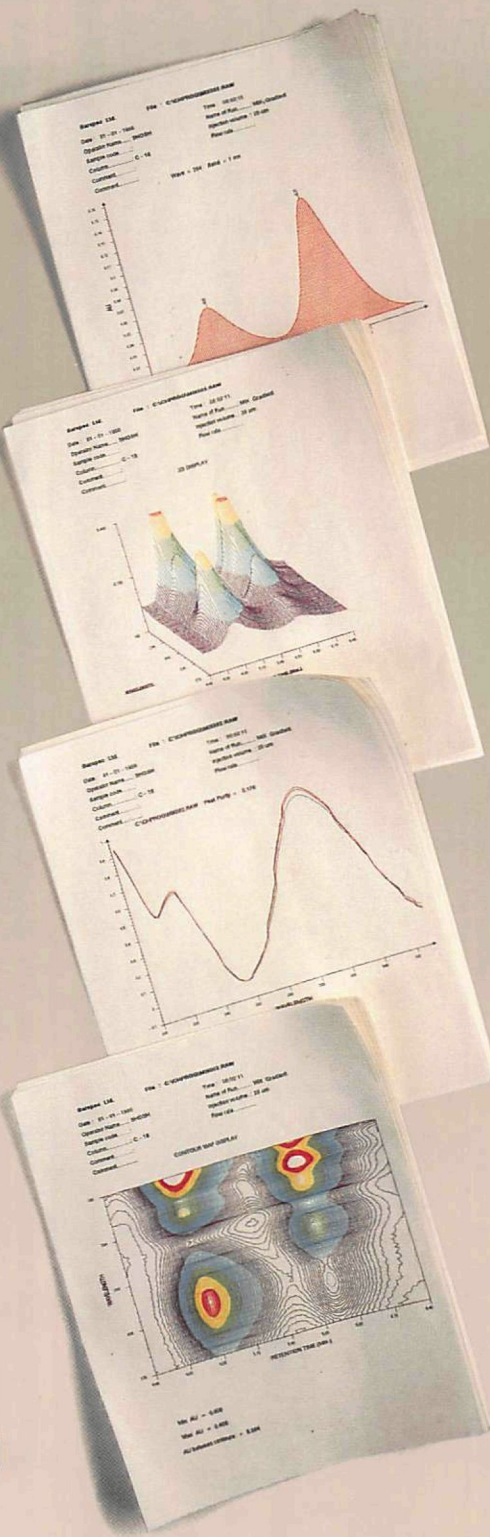
Move the mouse, click the button – the system does the rest:

You can open "windows," view 3D graphs, chromatograms, spectra, charts, and text. You can perform integration, peak purity, standards, smoothing, least square and much, much more.

It's all in the system.

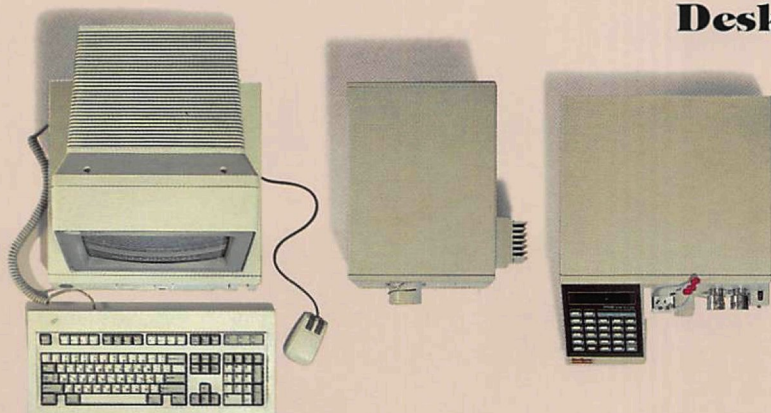
Chrom-A-Scope's powerful software will combine text, graphs and color graphics into publication-quality reports. It can also export all data to other programs such as 1-2-3®, Word®, Ventura®, Excel®, and more.

What you see is what you get.



Just pick and click!

Desktop Chromatography™: BarSpec's open architecture



S P E C I F I C A T I O N S

Detector Unit

Baseline Noise: 1×10^{-4} AU

Wavelength Range

Model 1937: 190–370 nm

Model 1970: 190–370 nm / 360–700 nm

Wavelength Accuracy: Better than 1 nm

Spectral Bandwidth: sampled every 1 nm

Time Constant: 0.1–10 sec

Linear Absorbance Range: -0.1–1.5 AU

Flow cell Illuminated Volume: 5 μ l, 10 μ l

Path Length: 5 mm, 10 mm

Power Requirements

Line Voltage: 100–120V or 220–240V

Line Frequency: 50/60 Hz

Power Consumption: 100VA

Physical Dimensions

Size: 376(W) X 232(H) X 325(D) mm

Weight: 17 kg (38 pounds)

Accessories

Chrom-A-Set™: Pump controller

TernaBar™: Ternary gradient pump

MonoBar™: Isocratic pump

Software system

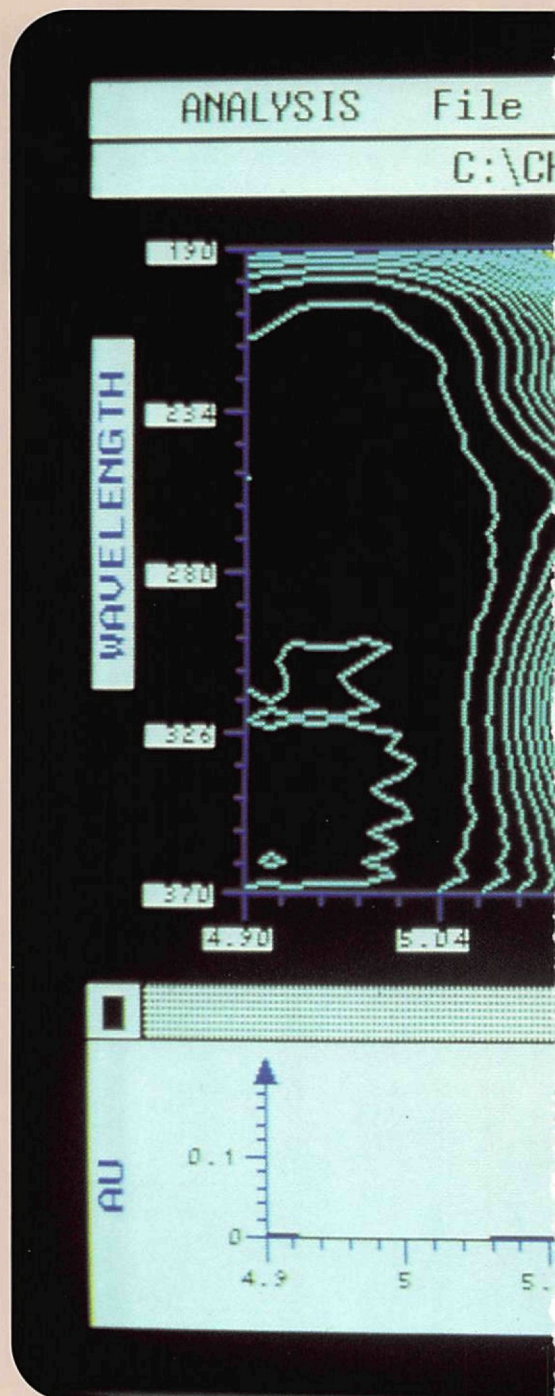
GEM-based menu driven software providing powerful but friendly mouse-controlled options; BarSpec software is compatible with the following programs:

Lotus 1-2-3®, Word®, WordStar®, Ventura Publisher®, DBIII®, GEM Write® and other ASCII-file based programs.

Output devices available:

HP Laserjet series, Honeywell Bull Color printer, Epson Hi RES printers and others.

Specifications are subject to change without notice.



BarSpec™

The pure facts. Fast.

BarSpec Inc.

PO Box 430, Mansfield, MA 02048, USA

Tel: 1-800-888-1944, 508-339-0005

Fax: 508-339-0007

BarSpec Ltd.

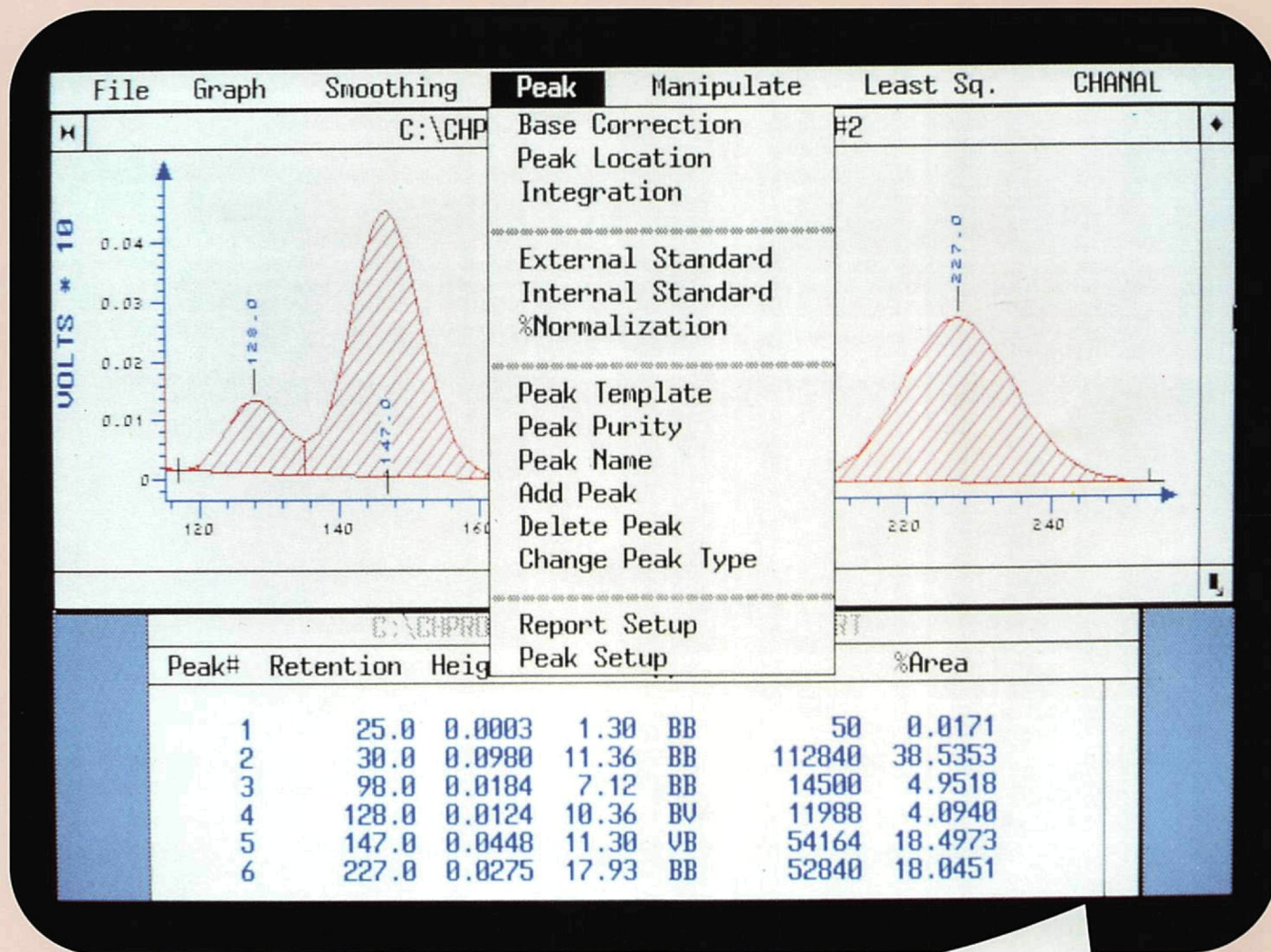
PO Box 560, Rehovot 76103, Israel

Tel: 972-8-461116

Fax: 972-8-461127

Chrom-A-Set™

Chrom-A-Set
chromatography data system:
quality, productivity
and efficiency
in one low-cost package



Pick and Click!™
BarSpec's
Desktop Chromatography™
does the rest!

BarSpec
TM

The pure facts. Fast.

HPLC Separation of Chlorination Products
of Salicylic Acid.

5-Chlorosalicylic acid is a pharmaceutical intermediate for some drugs, such as Niclosamine (veterinary anthelmintic), Mefenzone (anti-inflammatory) or Glyburide (anti-diabetic). This acid is obtained by direct chlorination of salicylic acid, in sulphuric acid, acetic acid or other solvents. On changing conditions, the chlorination can be directed to yield either monochlorination products or dichlorination products.

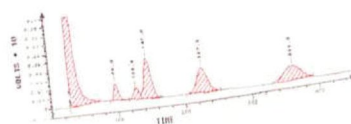


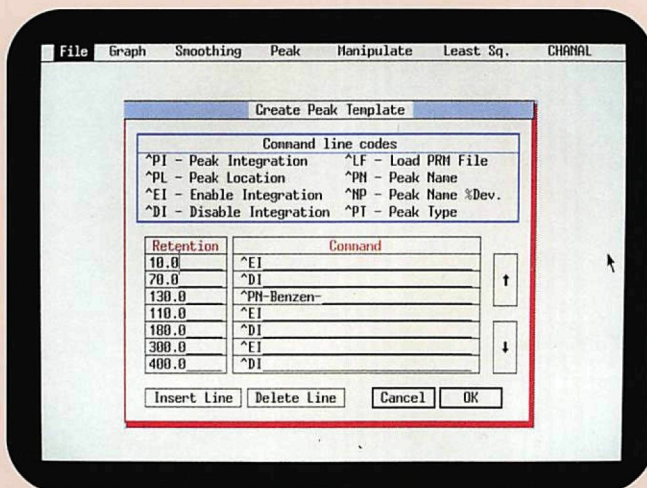
FIG. 1 Chromatogram of 5-Chlorosalicylic Acid

Analysis of this reaction mixture has been performed by gas chromatography after derivatization with dimethyl sulphate in the presence of alcoholic sodium hydroxide. We now describe a faster and more useful analysis of this reaction using reverse-phase HPLC.

Chrom-A-Set

Chromatography data system
to meet the
needs of the 'nineties

**Peak-time
event
for automated
integration**



What is Chrom-A-Set all about ?

Remarkably simple to learn and operate, Chrom-A-Set is a highly sophisticated, amazingly powerful data system, fully automated and compatible with all major LC and GC equipment.

Chrom-A-Set comprises an ordinary PC, mouse and printer, and a "little black box" containing BarSpec's unique chromatography software.

What will Chrom-a-Set do for you?

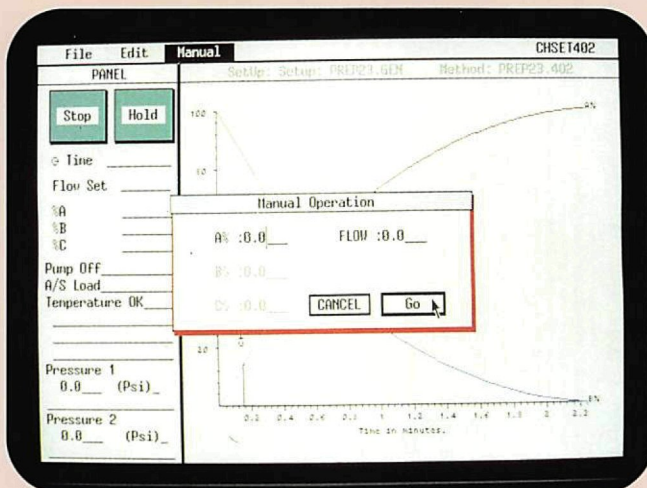
Chrom-A-Set's processing capabilities meet the growing demand for speed, efficiency and detail faced by all laboratories engaged in quality control, research and development, and routine procedures. Through multitasking, Chrom-A-Set simultaneously performs these functions and more:

- Data acquisition from up to four detectors independently.
- Automatic integration and report generation.
- Control of HPLC pumps.

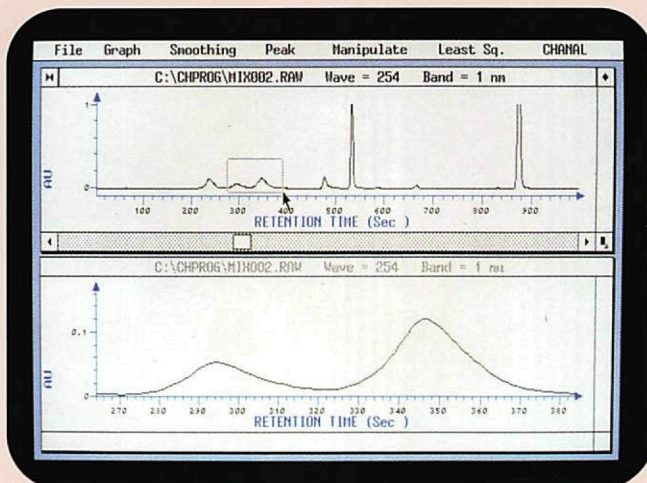
Most important:

Chrom-A-Set's Desktop Chromatography will combine text, graphs, charts and color graphics into publication-quality reports.

**HPLC low and
high pressure
gradient control**



**Enhanced
graphic
capabilities:
multi level
zoom and base
correction**



**Surprising simplicity,
remarkable power!**

The name of the game is Reports!

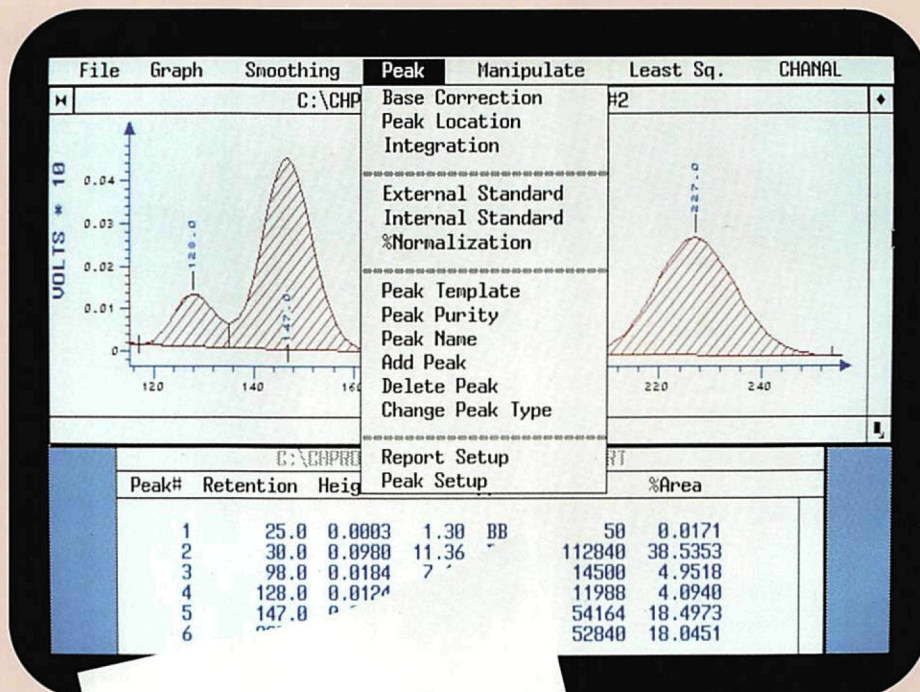
Gone are the days when an acceptable report consisted of a strip chart and a letter of explanation. Today's client is much more knowledgeable – and much more demanding!

To satisfy your client's most exacting requirements, Chrom-A-Set gives you these tools:

- Broad selection of standard or custom report formats.
- Unique integration algorithm which can detect and enhance poorly resolved peaks.
- Detailed Peak Time Event Table, simple to generate.
- Special graphic functions, including overlay and ratio plotting.
- Built-in standard calculations and unlimited multilevel calibration.

....and many others.

With a few friendly clicks of the Chrom-A-Set system's mouse, you can generate the most significant and impressive reports in the industry. Even using an ordinary printer, your reports will be of publication quality, like those illustrated here.



**Easy to use
pull-down menus
to calculate standards
and generate reports**

HPLC Separation of Chlorination Products of Salicylic Acid.
5-Chlorosalicylic acid is a pharmaceutical intermediate for some drugs, such as Riclosamine (veterinary anesthetic), Mesocaine (anti-inflammatory) or Glyburide (anti-diabetic). This acid is obtained by direct chlorination of salicylic acid, in sulphuric acid, acetic acid or other solvents. On changing conditions, the chlorination can be directed to yield either monochlorination products or dichlorination products.

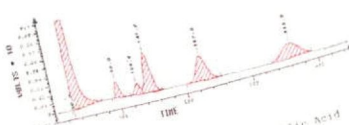


Fig. 1 Chromatogram of 5-Chlorosalicylic acid
Analysis of this reaction mixture has been performed by Gas Chromatography after derivatization with dimethyl sulphate in the presence of alcoholic sodium hydroxide. We now describe a faster and more useful analysis of this reaction using reverse-phase HPLC.

recovered in an amount of 100%. The acid mixture can easily be solubilized in methanol and separated on an RP 18 column. Solvent isolating the product, the acid mixture can easily be removed from the solvent by filtration. This mixture is solubilized in methanol and separated on an RP 18 column.

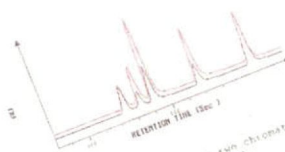
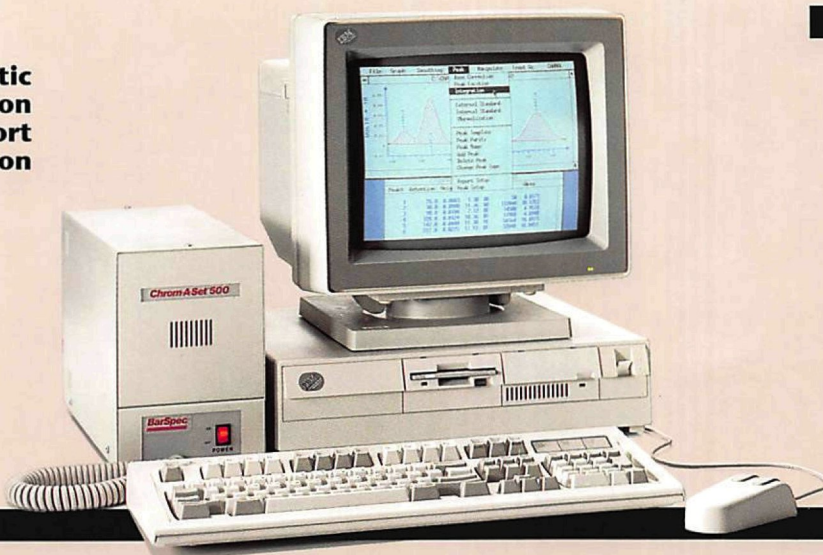


Fig. 2 Shows the comparison of two chromatograms.
(Peak 128.0 min. Blue 385 nm)

**Automatic
integration
and report
generation**



Chrom-A-Set
You can afford to own it
You can't afford not to!

Chrom-A-Set Model Guide

CST 50/11/20/50	Chrom-A-Set with four-channel detector integration input, multitasking capability, HPLC pumps controller, and full chromatography software including multiple windows, integration and report generating functions.
CST 50/11/50	Chrom-A-Set with four-channel detector integration input, multitasking capability, and full chromatography software including multiple windows, integration and report generating functions.
CST 50/10	Chrom-A-Set with two-channel detector integration input and full chromatography software including multiple windows, integration and report generating functions.
CST 50/20	Chrom-A-Set with HPLC gradient pumps controller and graphic software.

BarSpec
TM

The pure facts. Fast.

BarSpec Ltd.

PO Box 560, Rehovot 76103

Tel: 972-8-461116

Fax: 972-8-461127